



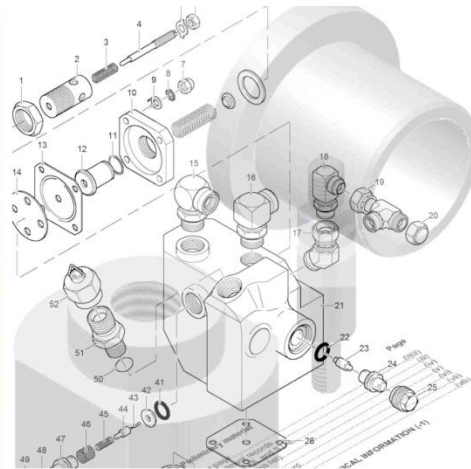
EXSEL DYTECNA
ENGINEERING

Supportability Engineering

Exsel Dytecna delivers dynamic, vigorously examined Supportability Engineering solutions that satisfy exacting user requirements.

Robust supportability planning and implementation is fundamental to achieving solid through-life equipment management.

Identifying the right way to sustain systems, in relation to their intended environment of operation, is an essential aspect in keeping costs to a minimum as well as ensuring users are able to sustain optimum levels of performance.



Exsel Dytecna Supportability Engineering services include:

- Pre-Qualification Questionnaire (PQQ) and tender process support
- Planning, management and delivery of programme Supportability Engineering / Integrated Logistic Support (ILS)
- Reliability prediction and analysis
- Damage mode prediction and analysis
- Maintenance task analysis
- Codification support
- Military packaging support
- Safety support services
- Expertise to supply technical documentation to all common specifications
- Obsolescence analysis and management recommendations
- Design and delivery of training
- Post Design Services (PDS)
- Contractor Logistic Support (CLS)
- Through life maintenance of Safety Cases, Training Package & Technical Documentation

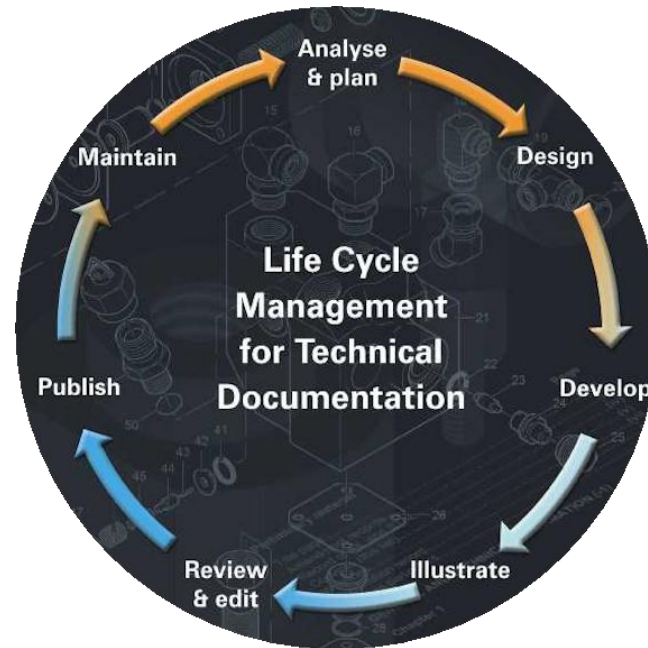
Exsel Dytecna: Solving, Supplying, Supporting.

Technical Publications

Exsel Dytecna has a wide range of technical expertise to supply documentation to all common specifications for all industries including:

- ASD S1000D common source database and Interactive Electronic Technical Publications (IETPs)
- Air Publications (AvP70)
- Army Equipment Support Publications (AESPs)
- Naval Publications (including Books of Reference (BRs))
- Air Transport Association Specifications
- Customer bespoke specifications
- ASD S2000M: International specification for materiel management and illustrated parts data

Life cycle management of technical documentation can be provided.



Safety

Exsel Dytecna offer the full range of safety support and consultancy services including:

- Development of Safety Cases for new equipment
- Facilitating safety activities for UORs
- Management and maintenance of legacy project health and safety
- Independent Safety Audits
- Human Factors Integration (HFI) assessments
- Hazard and Operability (HAZOP) studies
- Health, Safety and Environmental regulatory training
- Manual handling assessment
- Working at height assessment

Exsel Dytecna provide the expertise to establish Safety Management Systems to comply with the requirements and philosophy of POSMS and POEMS.



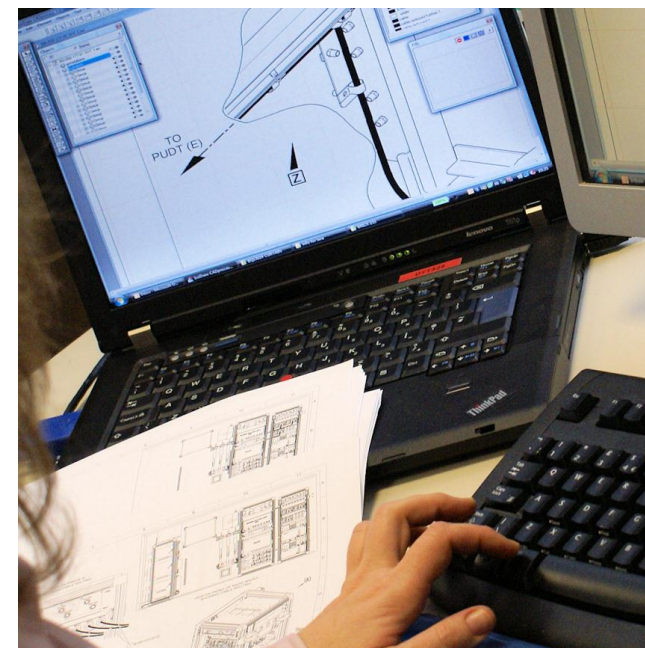
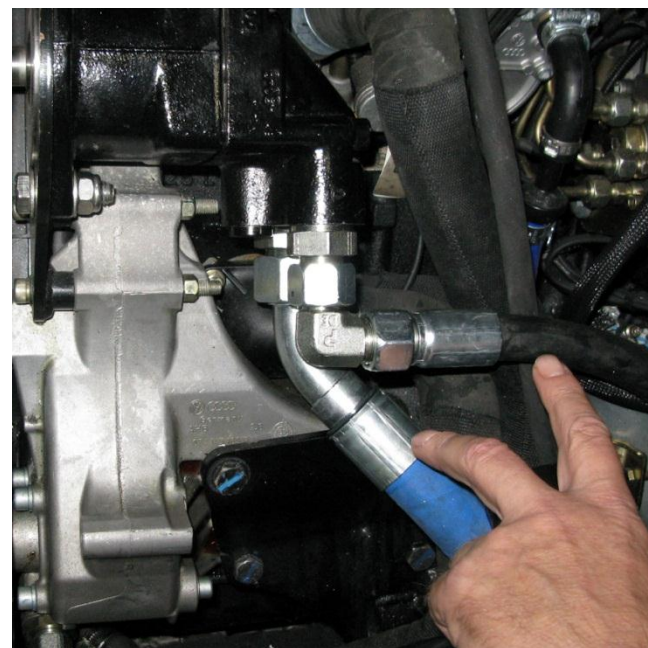
Training

Exsel Dytecna provides training support to any domain, at any level, providing support direct to procurement organisations, prime contractors and original equipment manufacturers.

The range of training support and consultancy services includes:

- Training Needs Analysis
- Lesson Planning
- Course design
- Course materials (including hardware and software)
- Training Delivery – direct or TTT

All deliverables are compliant as necessary with Defence Systems Approach to Training (DSaT) / JSP 822 Defence Training Support Manual / Customer specified or commercial training standards.



Planning For Supportability

In addition to the hard supportability deliverables described, Exsel Dytecna is also highly experienced in the planning, management and delivery of programme Supportability Engineering.

This service can provide total ILS management or contribute supportability analysis for informed programme decision making:

- Logistic Support Analysis
- Reliability and Maintainability Analysis
- Failure Mode Effect and Criticality Analysis (FMECA)
- Fault Tree Analysis (FTA)
- Maintenance Scheduling
- Level Of Repair Analysis (LORA)
- Whole Life Costing

As the equipment approaches the in-service period, advice and recommendations can be provided with respect to:

- Support & Test Equipment (S&TE / STTE)
- Spares Analysis and Supply Support
- Packaging, Handling, Storage & Transportation (PHS&T)

and plans for the through life period established:

- Post Design Service (PDS) philosophy
- Contractor Logistic Support (CLS) arrangements
- Obsolescence Management
- Maintenance of Safety Cases, Training Packages, Technical Documentation, etc.

Tender Support

Exsel Dytecna is ready to support the PQQ and tender process and work with a client to satisfy the submission needs with respect to the supportability requirements.

This service can include the production of a tailored Integrated Support Plan in addition to all necessary element plans.

Exsel Dytecna can also provide detailed system technical assurance assessment and acceptance activities for a wide range of systems and platforms and have the ability to conduct a full range of assessments including:

- Specification compliance or specific-to-role tests
- Performance tests (Environmental, EMC, etc.)
- Reliability growth and acceptance trials

About Exsel Dytecna

Dytecna originated in 1947 and from inception has demonstrated expertise in engineering with the selection and procurement of military and off-the shelf equipment for integration into a wide range of bespoke systems – installed into tracked and wheeled vehicles, static and air-portable containers or other mediums to suit special roles and environments.

In recent years this expertise has expanded to include the design and manufacture of training and simulation hardware, protection devices and equipment (including ballistic and electronic force protection systems), and conditioning monitoring and power distribution solutions for complex systems.

Today, as a leading independent engineering solutions, technology systems and support services company, Exsel Dytecna continues to deliver to its traditional customer base and is also bringing engineering innovation to other technologically advanced sectors.

Our People

People have always been the key to our success. All staff are academically and professionally qualified to meet internal job specifications. Suitably qualified personnel are recruited from electrical, electronic, mechanical, software and systems engineering disciplines from a wide range of industrial and military backgrounds, including but not exclusively, HM Forces, Aerospace, Telecoms, Automotive and Process industries.

Accreditation

Integrated Management System (IMS) operating in accordance with ISO 9001 and ISO 14001.

